

*Kasper T. Toeplitz*

# *Rupture & Dissipation*

*for ensemble :*

*flute (+piccolo)*

*clarinet*

*tuba*

*contrabass*

*electric guitar*

*electric organ*

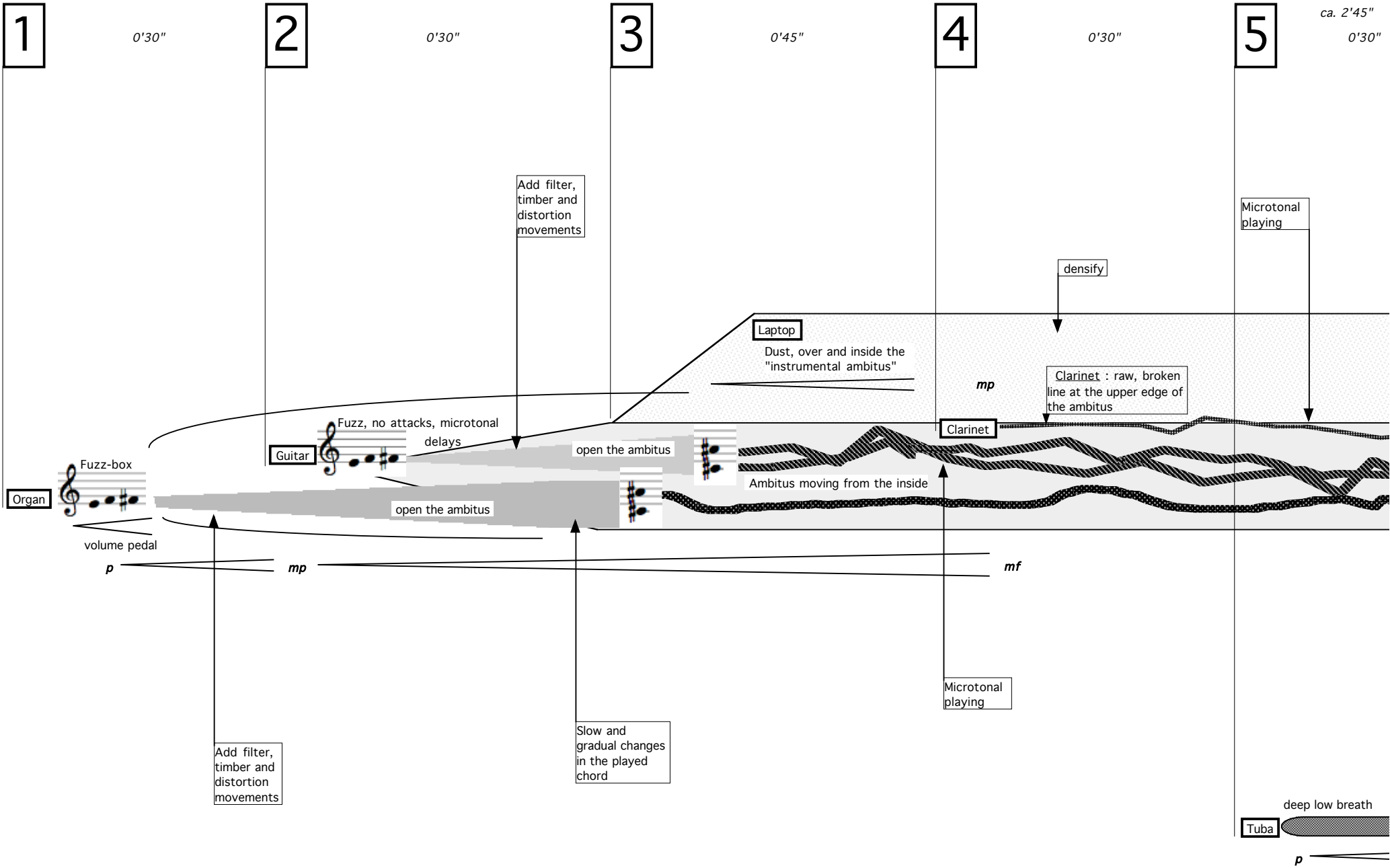
*percussion (tam, gong, symphonic bass drum)*

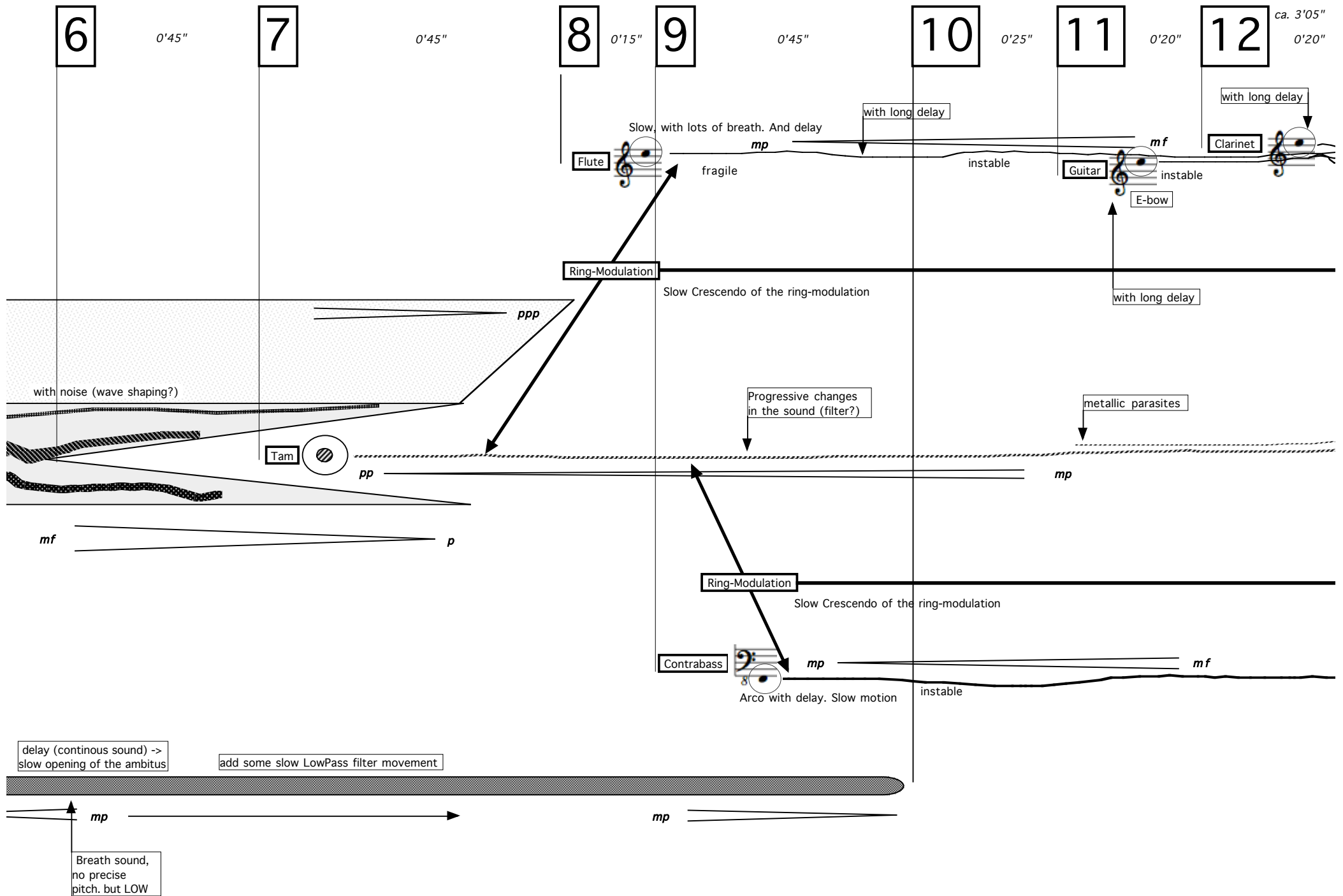
*laptops (2 players)*

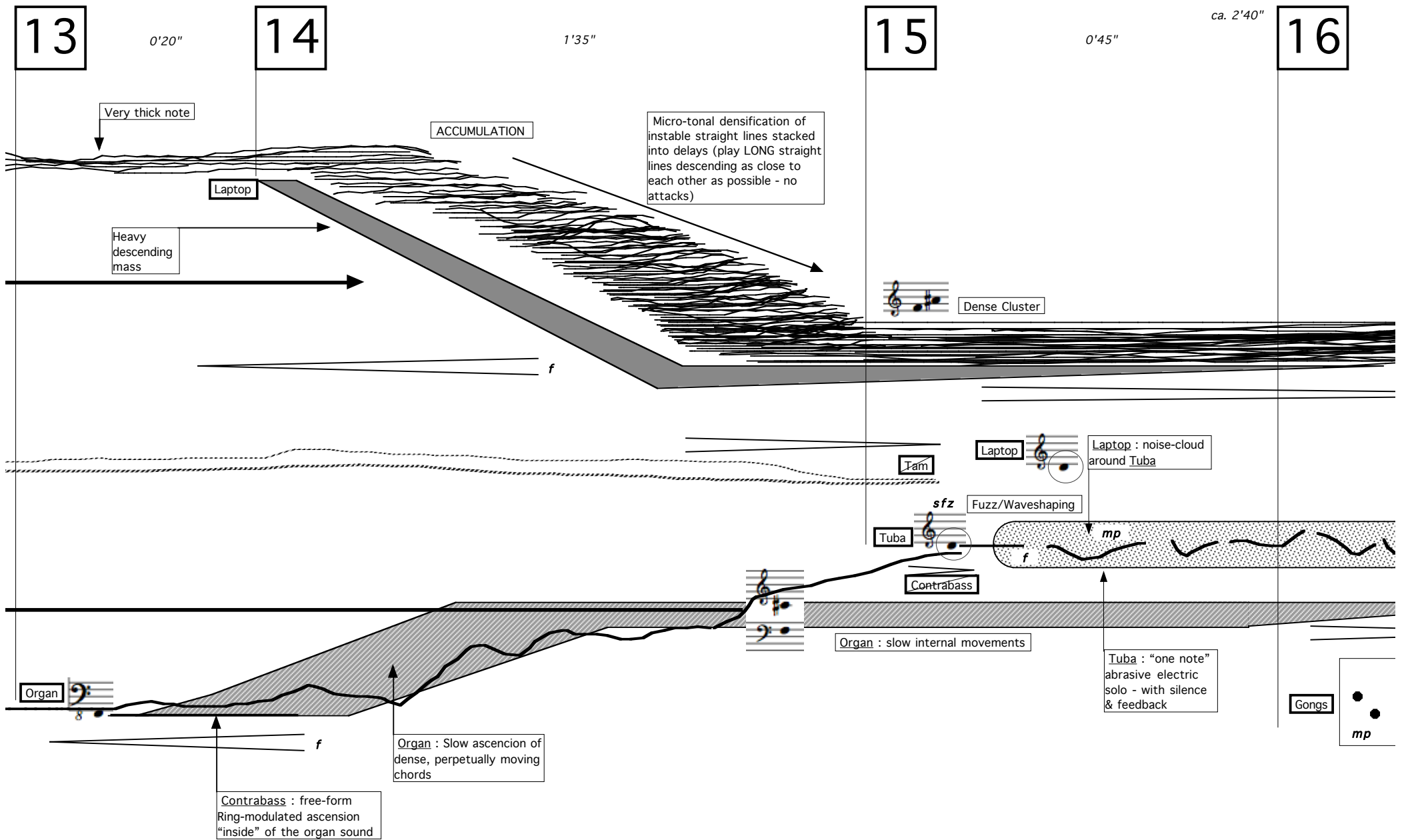
*\_\_all instruments are amplified and "treated" in real-time*

*The piece is commissioned by Ensemble Phoenix, Basel*

*may 2012*







2'00"

17

1'10"

Flute : add pitched breath into the Guitar

Delay

18

0'30"

19

ca. 4'10"

0'30"

Guitar

as evanescent as possible

Flute

*pp* **sempre**

*pp* **sempre**

Guitar : very high, slow & fuzzy lines (ebow?)

Quick sand moves (granular)

Clarinet

*p*

loose density, slow down



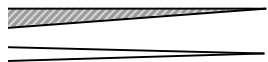
*mp*

Noisealone

*p*

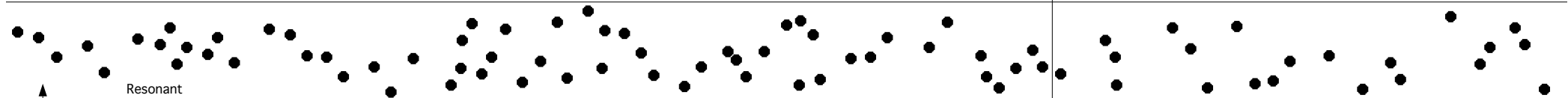


*p*



Resonant

Gongs : very calm, deep & slow "melody"



Organ

Add filter, timber and distortion movements

*pp* **sempre**



20

1'00"

21

1'00"

22

ca. 2'30"

0'30"



Contrabass



Bowed high-breath

*p*

*mp*



add pitch to the breath



*mf*

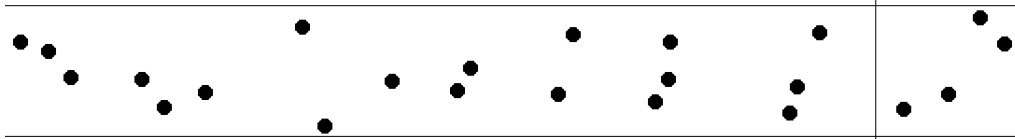
-> more pitch

Accumulation in long delays

Open the ambitus - very microtonal

*f*

Guitar



Tuba

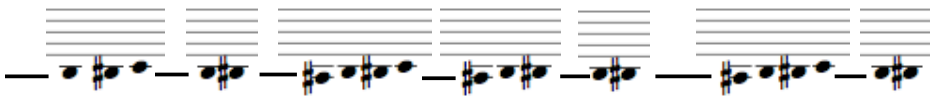


*mf*

Accumulation in long delays

Open the ambitus - very microtonal

*f*



23

0'30"

24

0'30"

25

0'20"

26

0'30"

27

ca. 2'30"  
0'40"

Flute



Open the ambitus -  
very microtonal

Accumulation  
in long delays

Clarinet



Open the ambitus -  
very microtonal

Accumulation  
in long delays

Organ



Fuzz& Filter

Open the ambitus

Accumulation  
in long delays

Open the ambitus -  
very microtonal

Electronics : very slow  
ascension of a (colored)  
noise texture in  
perpetual internal motion

Laptop

mf

Bass drum



very dense

very dense

very dense

Contrabass

The delay continues

very dense

very dense

28

0'40"

29

0'30"

30

0'30"

ca. 1'40"

31

Flute

The delay continues

Flute

Open the ambitus - very microtonal

Accumulation in long delays

Clarinet

ff

Open the ambitus some more & slow agitation

Electronics : perpetual internal motion

Tuba

The delay continues

Tuba

Open the ambitus - very microtonal

Accumulation in long delays

Contrabass

Open the ambitus - very microtonal

Accumulation in long delays



1'00"

32

1'45"

33

0'05"

34

0'10"

35

0'10"

36

0'15"

ca. 3'25"

37

Piccolo

VERY high note, fff

fff

Fuzz!

Organ : open the ambitus even more

Open the ambitus some more & slow agitation

Guitar

ff

CUT !

Piccolo

Delay only

ff

Delay only

ff

Laptop

Electronics : a noisy mass, alive

Organ

Organ : High Fuzz Cluster - in slow motion

Organ : Low Fuzz Cluster - in slow motion

Delay only

ff

Delay only

ff

Guitar

v

v

v

0'40"

38

2'00"

39

0'30"

40

ca. 3'50"

0'40"

Guitar :High Fuzz  
monochrome agitation

*mf*

Flute



Distortion, Waveshaping

*f*

Very long straight lines, short silences between notes

Accumulation  
in long delays

Clarinet



Distortion, Waveshaping

*f*

Very long straight lines, short silences between notes

Accumulation  
in long delays

Electronics :  
open the  
ambitus

Very slow = 30

Electronics : noise is  
almost a counterpoint  
to the instruments

Contrabass



Distortion, Waveshaping

*f*

Very long straight lines, short silences between notes

Contrabass : very  
slow glissandos

Accumulation  
in long delays

Tuba



Distortion, Waveshaping

*f*

Very long straight lines, short silences between notes

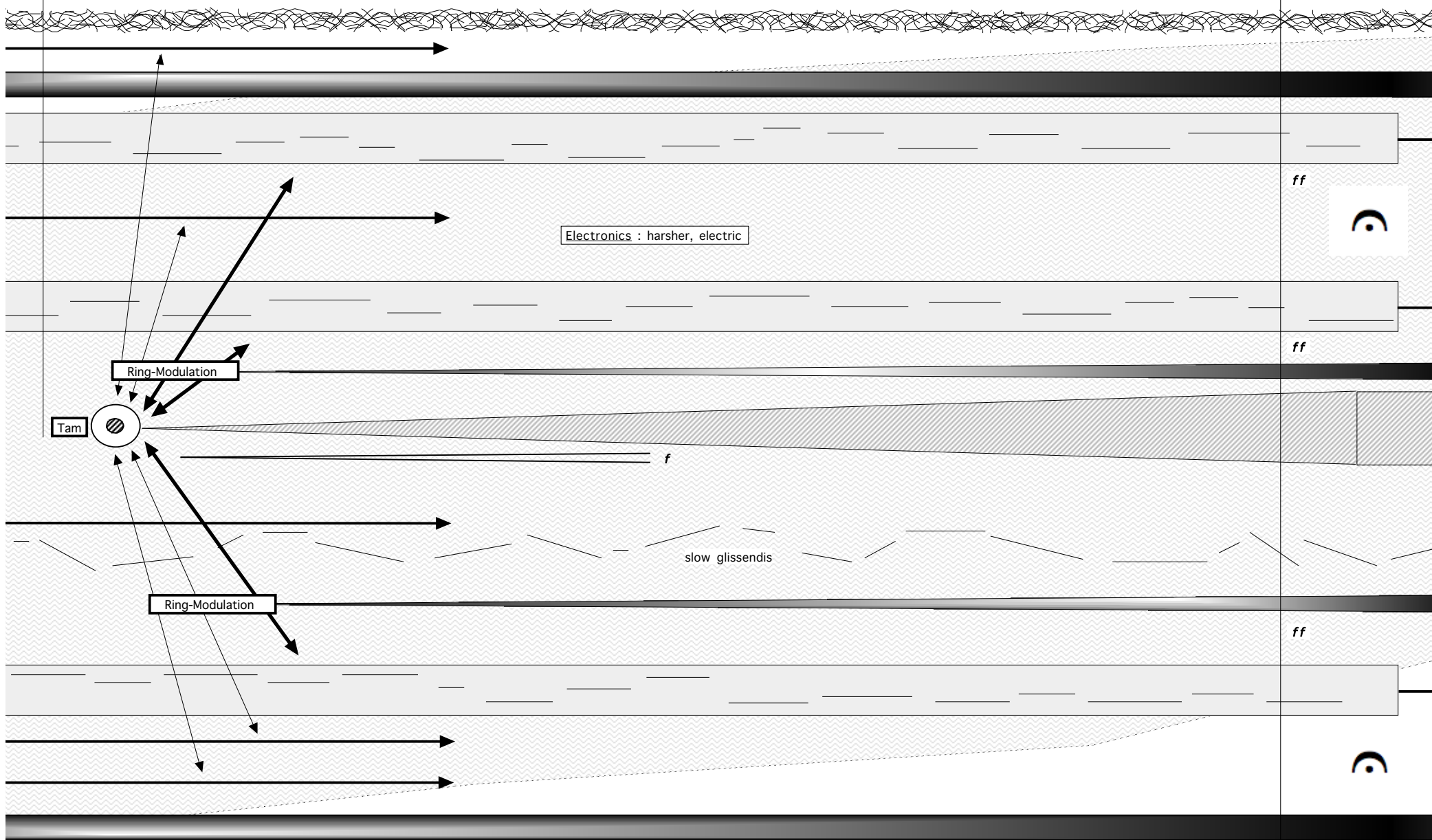
41

3'00"

42

ca. 5'00"

2'00"



43

0'40"

44

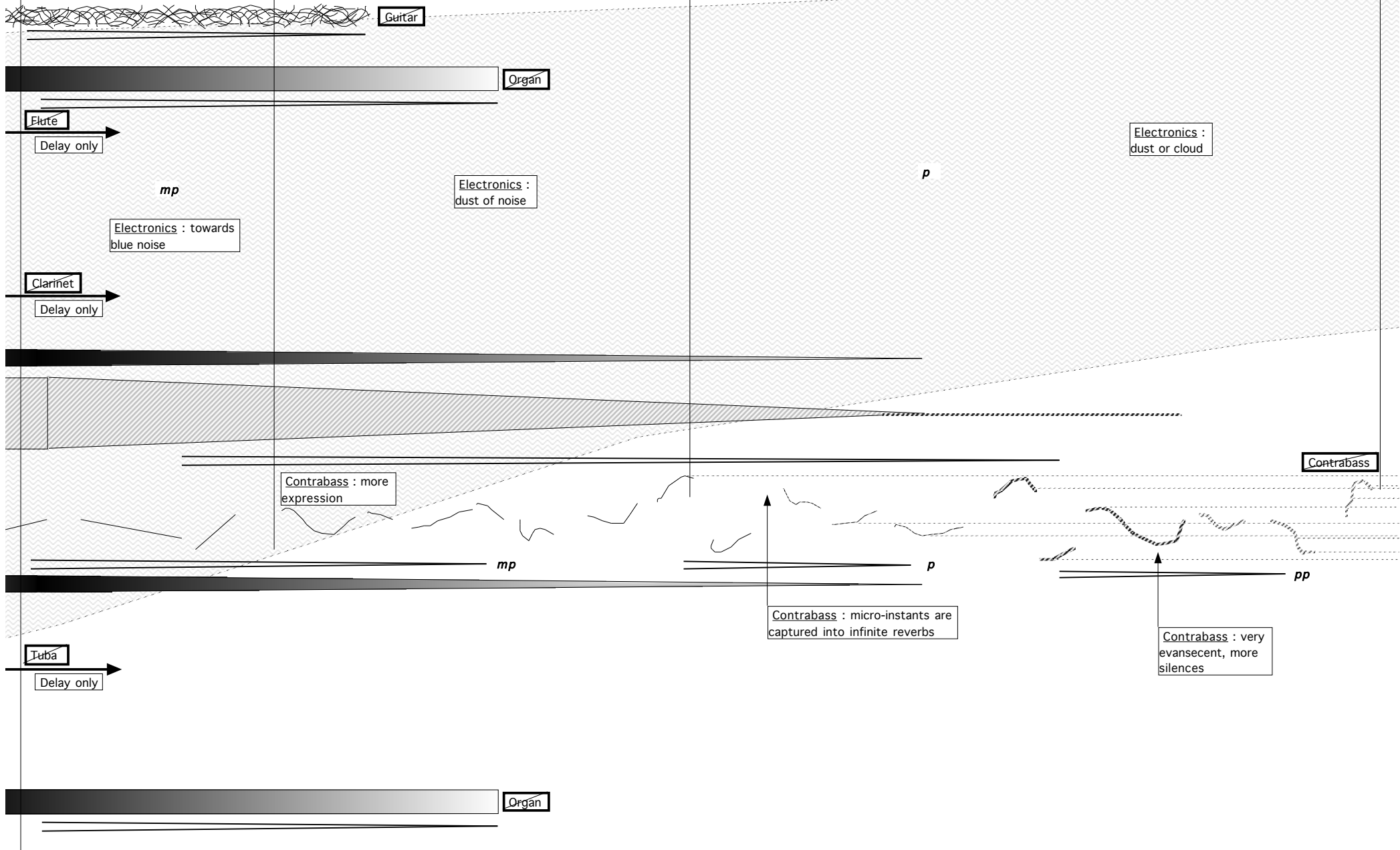
1'40"

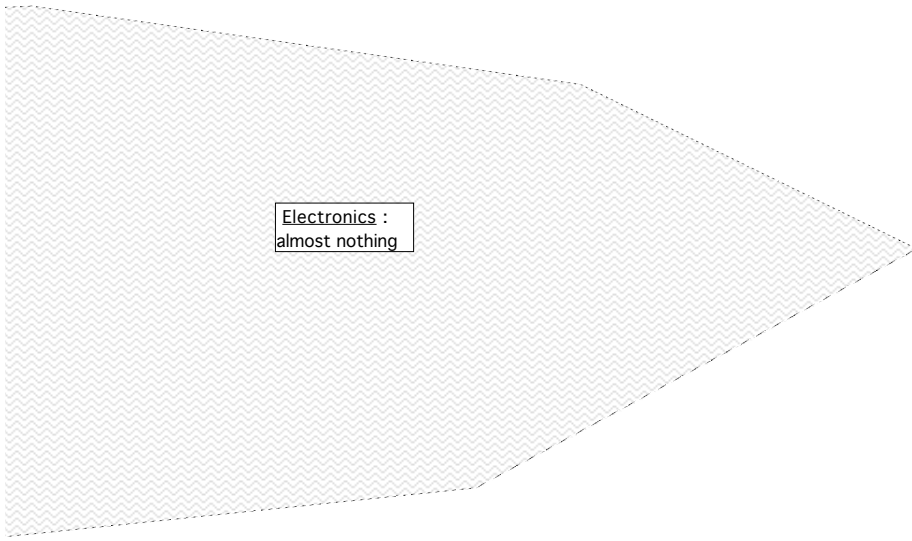
45

2'00"

ca. 4'20"

46





Electronics :  
almost nothing



reverb : slowly  
dissipate